

PULL TAB

Cl/Sfb

(31.9) Xt 7

PERF  
DIGITAL VISION ONLINE



# Section 18

## Stainless Steel Furniture

Other ironmongery available in this finish. Please enquire

- |                          |                                     |         |
|--------------------------|-------------------------------------|---------|
| <input type="checkbox"/> | Stainless Steel Lever Furniture     | 176-177 |
| <input type="checkbox"/> | Stainless Steel Escutcheons & Turns | 177-178 |
| <input type="checkbox"/> | Stainless Steel Numerals            | 178     |
| <input type="checkbox"/> | Stainless Steel Pull Handles        | 178-179 |
| <input type="checkbox"/> | Stainless Steel Door Stops          | 179     |
| <input type="checkbox"/> | Stainless Steel Coat Hooks          | 179     |
| <input type="checkbox"/> | Stainless Steel Kick Plates         | 180     |
| <input type="checkbox"/> | Stainless Steel Letter Plates       | 180     |
| <input type="checkbox"/> | Stainless Steel Flush Bolts         | 180     |

# STAINLESS STEEL LEVER FURNITURE

ALL LEVERS SUPPLIED WITH BOLT THROUGH FIXINGS

## 0011-0361-60SP / 0011-0361-60UN Round Bar Lever on Rose



**Size:** Dia: 19mm, Rose: 52x6mm, Handle Length: 140mm  
Projection: 70mm

## 0011-0362-60SP / 0011-0362-60UN Round Bar Lever on Rose

**Size:** Dia: 22mm, Rose: 52x6mm, Length: 140mm  
Projection: 70mm

**Finish:** Satin, Polished

**Notes:** **Sprung Loaded.** Stainless steel underplate. Hollow section.  
**Unsprung.** Stainless steel underplate. Hollow section

## 0011-0363-60SP / 0011-0363-60UN Straight Bar Lever on Rose



**Finish:** Satin, Polished

**Size:** Dia: 19mm, Rose: 52x6mm, Handle Length: 140mm  
Projection: 70mm

**Notes:** **Sprung Loaded.** Stainless steel underplate. Hollow section  
**Unsprung.** Stainless steel underplate. Hollow section

## 0011-0364-60SP / 0011-0364-60UN Straight Mitred Lever on Rose

**Finish:** Satin, Polished

**Size:** Dia: 19mm  
Rose: 52x6mm  
Length: 140mm  
Projection: 70mm



**Notes:** **Sprung Loaded.** Stainless steel underplate. Hollow section  
**Unsprung.** Stainless steel underplate. Hollow section



# 01285 659488

Please call us if you need any advice.  
We are here to help you

Name	Code	Size	Finish	Notes
Round Bar Lever Latch	0011-0361-11	Dia: 19mm Backplate: 178x40mm Length: 140mm Projection: 70mm	Satin Polished	Sprung Loaded Stainless steel underplate Hollow section
Round Bar Lever Lock	0011-0361-12	Dia: 19mm Backplate: 178x40mm Length: 140mm Projection: 70mm Centres: 57mm	Satin Polished	Sprung Loaded Stainless steel underplate Hollow section
Round Bar Lever Lock-Euro	0011-0361-13	Dia: 19mm Backplate: 178x40mm Length: 140mm Projection: 70mm Centres: 47.6mm	Satin Polished	Sprung Loaded Stainless steel underplate Hollow section
Round Bar Lever Lock-Euro	0011-0361-13-72	Dia: 19mm Backplate: 178x40mm Length: 140mm Projection: 70mm Centres: 72mm	Satin Polished	Sprung Loaded Stainless steel underplate Suits Din lock cases. See page 125
Round Bar Lever Bathroom	0011-0361-15	Dia: 19mm Backplate: 178x40mm Length: 140mm Projection: 70mm Centres: 57mm	Satin Polished	Sprung Loaded Stainless steel underplate Hollow section
Round Bar Lever Bathroom	0011-0361-15-78	Dia: 19mm Backplate: 178x40mm Length: 140mm Projection: 70mm Centres: 78mm	Satin Polished	Sprung Loaded Stainless steel underplate Suits Din lock cases. See page 125



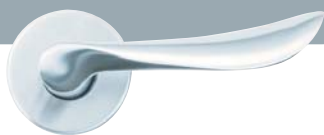
# STAINLESS STEEL LEVER FURNITURE STAINLESS STEEL ESCUTCHEONS & TURNS

ALL LEVERS SUPPLIED WITH BOLT THROUGH FIXINGS

## 0011-0365-60SP Scroll Lever on Rose

**Finish:** Satin, Polished  
**Size:** Rose: 52x6mm  
Length: 125mm  
Handle Projection: 70mm

**Notes:** Sprung. Stainless steel underplate. Solid section



## 0011-0361-67 Euro Escutcheon

**Finish:** Satin, Polished  
**Size:** Dia: 52x6mm  
**Notes:** Stainless steel underplate



## 0011-0366-60SP / 0011-0366-60UN T-Bar Lever on Rose

**Finish:** Satin, Polished  
**Size:** Dia: 19mm  
Rose: 52x6mm  
Length: 140mm  
Projection: 70mm

**Notes:** Sprung. Stainless steel underplate. Hollow section



## 0011-0361-68 Oval Escutcheon

**Finish:** Satin, Polished  
**Size:** Dia: 52x6mm  
**Notes:** Stainless steel underplate



## 0011-0367-60SP T-Bar Lever on Rose

**Finish:** Satin, Polished  
**Size:** Dia: 19mm  
Rose: 52x6mm  
Length: 140mm  
Projection: 70mm

**Notes:** Sprung. Stainless steel underplate. Hollow section



## 0011-0361-69 Bathroom Turn & Release Indicator

**Finish:** Satin, Polished  
**Size:** Dia: 52x6mm  
**Notes:** Stainless steel underplate  
Red/White Indicator  
5mm spindle



## 0011-0361-69/D Disabled Bathroom Turn & Release Indicator

**Finish:** Satin, Polished  
**Size:** Dia: 52x6mm  
**Notes:** Stainless steel underplate  
Red/White Indicator  
5mm spindle



## 0011-0368-60SP Wave T-Bar Lever on Rose

**Finish:** Satin, Polished  
**Size:** Dia: 19mm  
Rose: 52x6mm  
Length: 140mm  
Projection: 65mm

**Notes:** Sprung. Stainless steel underplate. Hollow section



## 0011-0369-60SP Curved Lever on Rose

**Finish:** Satin, Polished  
**Size:** Dia: 19mm  
Rose: 52x6mm  
Length: 140mm  
Projection: 70mm

**Notes:** Sprung, Stainless steel underplate. Hollow section



## 0011-0361-70 Blind Escutcheon

**Finish:** Satin, Polished  
**Size:** Dia: 52x6mm  
**Notes:** Stainless steel underplate



## 0011-0361-66 Lever Key Escutcheon

**Finish:** Satin, Polished  
**Size:** Dia: 52x6mm  
**Notes:** Stainless steel underplate



# 01285 659488

Please call us if you need any advice.  
We are here to help you

# STAINLESS STEEL ESCUTCHEONS PULL HANDLES & NUMERALS

**0011-0306**

Standard Cylinder Pull

**Finish:** Satin, Polished  
**Size:** Size: 90x42mm



**0011-0306Y**

Euro Cylinder Pull

**Finish:** Satin, Polished  
**Size:** Size: 90x42mm



**0011-0306U**

Oval Cylinder Pull

**Finish:** Satin, Polished  
**Size:** Size: 90x42mm



**0011-0340FF**

Face Fix Numerals/Letters

**Finish:** Satin, Polished  
**Size:** Height: 74mm



**0011-0340CF**

Concealed Fix Numerals/Letters

**Finish:** Satin, Polished  
**Size:** Height: 74mm



**0011-3617BF**

T' Bar Pull Handle-Bolt Fix

**Finish:** Satin, Polished  
**Size:** Dia: 19mm. Centres: 225mm, 300mm  
**Notes:** Hollow Section.  
Supplied with M8x75 alan key csk bolts. Key supplied



**0011-3617BF**

T' Pull Handle-Back to Back

**Finish:** Satin, Polished  
**Size:** Dia: 19mm. Centres: 225mm, 300mm  
**Notes:** Hollow section. Suits doors from 39-49mm thick

**0011-3616BF**

Round Bar Pull Handle-Bolt Fix

**Finish:** Satin, Polished  
**Size:** Dia: 19mm  
Centres: 150mm, 225mm  
300mm, 425mm, 600mm  
**Notes:** Hollow Section. Supplied with  
M8x75 alan key csk bolts. Key supplied



**0011-3616CF**

Round Bar Pull Handle on Rose

**Finish:** Satin, Polished  
**Size:** Dia: 19mm. Centres: 150mm, 225mm, 300mm. Rose: 52x6mm  
**Notes:** Hollow section. Concealed fixing

**0011-3616BB**

Round Bar Pull Handle-Back to Back

**Finish:** Satin, Polished  
**Size:** Dia: 19mm. Centres: 150mm, 225mm, 300mm, 425mm, 600mm  
**Notes:** Hollow section. Suits doors from 39-49mm thick

**0011-3616-22BF**

Round Bar Pull Handle-Bolt Fix

**Finish:** Satin, Polished  
**Size:** Dia: 22mm, Centres: 150mm  
225mm, 300mm  
425mm, 600mm  
**Notes:** Hollow Section.  
Supplied with M8x75 alan key csk bolts. Key supplied



**0011-3616-22CF**

Round Bar Pull Handle on Rose

**Finish:** Satin, Polished  
**Size:** Dia: 22mm. Centres: 150mm, 225mm, 300mm. Rose: 52x6mm  
**Notes:** Hollow section. Concealed fixing

**0011-3616-22BB**

Round Bar Pull Handle-Back to Back

**Finish:** Satin, Polished  
**Size:** Dia: 19mm. Centres: 150mm, 225mm, 300mm, 425mm, 600mm  
**Notes:** Hollow section. Suits doors from 39-49mm thick

**0011-0340-25**

Cranked Pull Handle-Bolt Fix

**0011-0341-25**

Cranked Pull Handle-Back to Back Fixing

**Finish:** Satin, Polished  
**Size:** Centres: 300mm, 350mm  
Dia: 25mm  
**Notes:** Hollow section. Suits doors from 39-49mm thick



# STAINLESS STEEL PULL HANDLES DOOR STOPS & COAT HOOKS

**0011-0342-30**

Semi-Circular Pull Handle-Bolt Fixing

**0011-0343-30**

Semi-Circular Pull Handle-Back to Back Fixing

Finish: Satin, Polished

Size: Centres: 350mm  
Dia: 30mm

Notes: Made from hollow section  
Suits doors from 39-49mm thick



**0011-0344-30**

Semi-Circular Pull Handle-Bolt Fixing

**0011-0345-30**

Semi-Circular Pull Handle-Back to Back Fixing

Finish: Satin, Polished

Size: Centres: 200mm  
300mm, 350mm  
Bar Dia: 30mm. Leg: 25x90mm

Notes: Made from hollow section  
Suits doors from 39-49mm thick

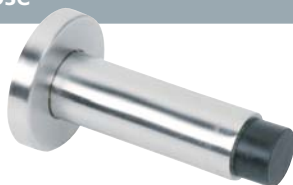


**0011-0334A**

Skirting Door Stop on Rose

Finish: Satin, Polished

Size: Projection: 76mm



**0011-0334B**

Concealed Fix Skirting Door Stop

Finish: Satin, Polished

Size: Projection: 76mm



**0011-0334D**

Floor Fixed Door Stop

Finish: Satin, Polished

Size: 57x55mm  
Height: 18mm



**0011-0334E**

Shielded Door Stop

Finish: Satin, Polished

Size: 45x45x25mm



**0054-1030**

Door Stop

Finish: Satin, Polished

Size: 40x30mm



**0011-0317**

Hat & Coat Hook

Finish: Satin, Polished

Size: Height: 120mm  
Width: 18mm  
Projection: 60mm



**0011-0318**

Buffered Hat & Coat Hook

Finish: Satin, Polished

Size: Height: 125mm  
Width: 18mm  
Projection: 60mm



**0011-0319**

Wardrobe Hook

Finish: Satin, Polished

Size: Height: 63mm  
Width: 18mm  
Projection: 30mm



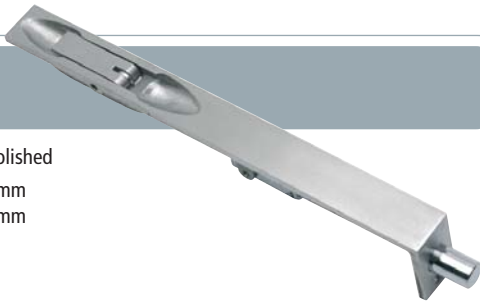
**01285 659488**

Please call us if you need any advice.  
We are here to help you

# STAINLESS STEEL KICK PLATES LETTER PLATES & FLUSH BOLT

## 0011-0326 Flush Bolt

**Finish:** Satin, Polished  
**Size:** 200x20mm  
250x20mm



## 0011-0324A Push Plates

**Finish:** Satin, Polished  
**Size:** 300x75mm  
Thickness 1.6mm



## 0011-0324C Push Plate

**Finish:** Satin, Polished  
**Size:** 350x75mm  
Thickness 1.6mm



## 0011-0324B Radius Push Plate

**Finish:** Satin, Polished  
**Size:** 300x75mm  
Thickness 1.6mm



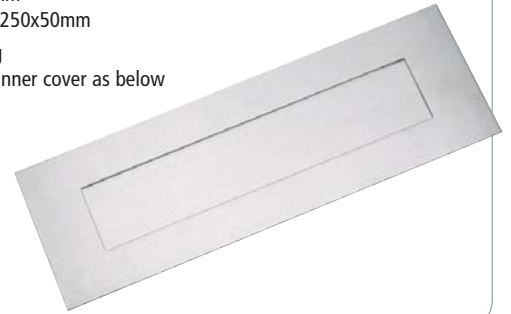
## 0011-0324P Engraved Push Plate

**Finish:** Satin, Polished  
**Size:** 300x75mm  
Thickness 1.6mm



## 0147-34510 / 0147-34511 Letter Plate

**Finish:** Satin / 0147-34510  
Polished / 0147-34511  
**Size:** 330x110mm  
Aperture: 250x50mm  
**Notes:** Bolt fixing  
Use with inner cover as below



## 0147-34512 Inner Cover Flap

## 0147-34513 Inner Cover Flap

**Finish:** Satin / 0156-34512  
Polished / 0156-34513  
**Size:** 330x110mm  
**Notes:** Bolt fixes into letterplate as above



## 0102-7560 Kick Plate

**Finish:** Satin, Polished  
**Size:** Sizes to order.  
Available in 1.6mm, 3mm thickness



**01285 659488**

Please call us if you need any advice.  
We are here to help you